

HL Light Gauge Purlin Hangers

These top mount hangers are designed for supporting floor joists or 2x dimensional lumber. The top mount style allows builders to drop in joists or purlins quickly.

Materials: 18 gauge

Finish: G90 galvanizing

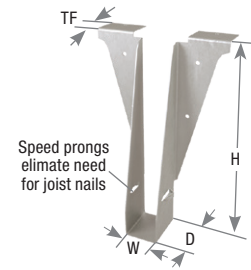
Codes: IBC, FL, LA

Installation:

- Use all specified fasteners. See Product Notes, page 18.



Typical HL210 installation



HL210

KB / KLB Beam & Purlin Hangers

With a top mount design and heavy steel fabrication the KB and KLB hangers can cover medium-to-heavy beam and purlin applications. The top mount design offers high loads with less nailing than comparable face mount hangers.

KLB – 14 gauge

KB – 12 gauge

Materials: See chart

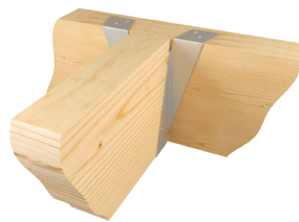
Finish: G90 galvanizing

Options: See chart for Corrosion Finish Options

Codes: IBC, FL, LA

Installation:

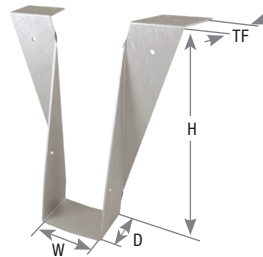
- Use all specified fasteners. See Product Notes, page 18.
- NA20D nails are included with hangers where applicable.
- For welded installations, see page 325.
- **KB models are not recommended for use with LVL, PSL, or LSL members.**



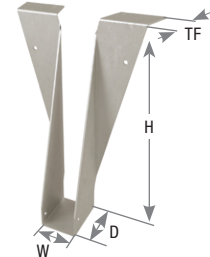
Typical KB installation



Typical KLB installation



KB



KLB

Primarily used to hang joists or headers in medium load conditions. These hangers provide higher load values with less nailing.

Materials: 12 gauge

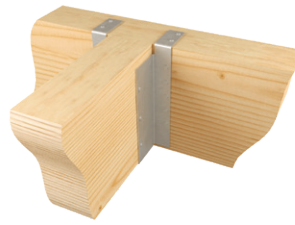
Finish: G90 galvanizing

Options: All nominal lumber sizes are available for rough/full size lumber. See Specialty Options Chart.

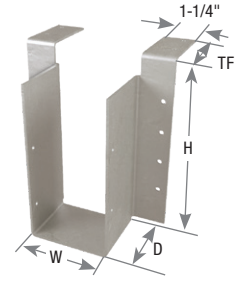
Codes: IBC, FL, LA

Installation:

- Use all specified fasteners. See Product Notes, page 18.
- Check top flange dimensions to ensure compatibility with header widths.
- **Do not use for welded or nailer applications. Reference Specialty Options chart below for hanger options.**



HDO standard installation



HDO28-2



Typical HDO410IF inverted flange installation



Typical HDO skewed option installation

Specialty Options Chart

Refer to Specialty Options pages 320 and 322 for additional details.

Option	Skewed ^{1,3}	Sloped Seat ²	Sloped / Skewed ^{1,2,3}	Inverted Flange
Range	1° to 67-1/2° when width is 1-3/4" or less. 1° to 50° on all others.	1° to 45°	See Sloped Seat and Skewed	Not available in widths less than 3-1/8"
Allowable Loads	100% of table load. 75% of uplift load on skews greater than 15°.	100% of table load	80% of table load. 75% of uplift load on skews greater than 15°.	100% of table load. 65% of table load when nailing into the support members end grain.
Ordering	Add <i>SK</i> , angle required, right (<i>R</i>) or left (<i>L</i>), and square cut (<i>SQ</i>) or bevel cut (<i>BI</i>) to product number. Ex. HD0210_SK45R_SQ	Add <i>SL</i> , slope required, and up (<i>U</i>) or down (<i>D</i>), to product number. Ex. HD0210_SL30D	See Sloped Seat and Skewed. Ex. HD0210_SK45R_SQ_SL30D	Add <i>IF</i> to product number. Ex. HD0610_IF

- 1) Skewed hangers with skews greater than 15° may have all joist nailing on outside flange.
- 2) Sloped or sloped / skewed hangers with slopes greater than 15° may have additional joist nails.
- 3) For skewed hangers, the required cut type (square or bevel) of joist member may vary based on skew angle and width of hanger. Some square cut hangers will require custom pricing due to welded back plate.

SW – Light-duty hanger

SWH – Medium-duty hanger

KHW – Heavy-duty hanger installs with NA20D nails for higher load capacities

Materials: SW top flange - 12 gauge; stirrup - 12 gauge;
SWH top flange - 7 gauge; stirrup - 12 gauge;
KHW top flange - 3 gauge; stirrup - 10 gauge

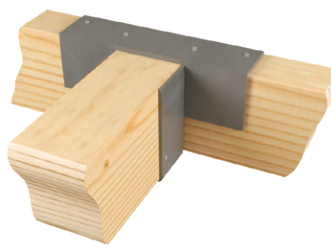
Finish: Primer

Options: All nominal lumber sizes are available for rough/ full size lumber. See Specialty Options below.

Codes: IBC, FL, LA

Installation:

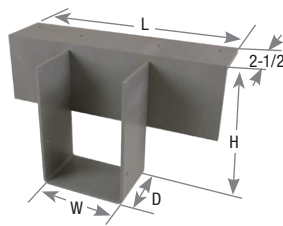
- Use all specified fasteners. See Product Notes, page 18.
- NA20D nails are supplied with KHW hangers.
- For welded installations see page 325.
- **KHW models are not recommended for use with LVL, PSL, or LSL headers.**



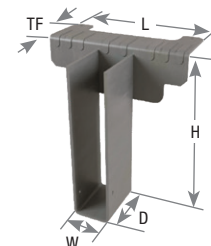
Typical KHW46 installation



Typical SW210 installation



KHW46



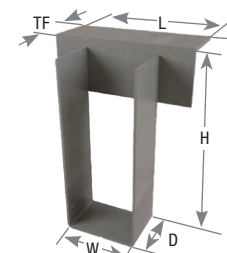
SW210

Nailer Installation Chart

Chart represents maximum allowable loads for hangers used on wood nailers. Reference page 203.

MiTek USP Series	Nailer Size	Fastener Schedule ³				DF/SP Allowable Loads (Lbs.) ¹	
		Nailer		Joist		Download 100%	SPF Allowable Loads (Lbs.) ¹
		Top Qty	Type	Qty	Type		
SW ² widths ≥ 2-9/16"	2X	2	10d x 1-1/2	2	10d x 1-1/2	1635	1115
	3x	2	16d x 2-1/2	2	10d x 1-1/2	2390	2010
	(2) 2x	2	16d x 2-1/2	2	10d x 1-1/2	2390	2010
	4x	2	16d x 2-1/2	2	10d x 1-1/2	2390	2010
SWH	2X	2	10d x 1-1/2	2	10d x 1-1/2	2600	1770
	3X	2	16d x 2-1/2	2	10d x 1-1/2	3305	2280
	(2) 2x	2	16d x 2-1/2	2	10d x 1-1/2	3305	2280
	4x	2	16d x 2-1/2	2	10d x 1-1/2	3305	2280
KHW	3X	4	16d x 2-1/2	2	10d	4415	3525

- 1) Listed loads shall not be increased.
- 2) **SW hangers with a width of less than 2-9/16" are limited to 2,315 lbs. of download.**
- 3) **NAILS:** 10d x 1-1/2 nails are 0.148" dia. x 1-1/2" long, 10d nails are 0.148" dia. x 3" long, 16d x 2-1/2 nails are 0.162" dia. x 2-1/2" long.
New products or updated product information are designated in **blue font**.



SWH410

Specialty Options Chart – Refer to Specialty Options pages 320, 322-323 for additional details.

Option	Skewed ^{1,3}	Sloped Seat ²	Sloped / Skewed ^{1,2,3}	Sloped Top Flange ⁴	Top Flange Offset	Saddle	Ridge								
Range	1° to 84°	1° to 45°	See Sloped Seat and Skewed	0° to 35°	--	--	0° to 45°								
Allowable Loads	100% of table load	100% of table load	100% of table load	100% of table load	<table border="1"> <tr> <th>Hanger Width</th> <th>% of table load:</th> </tr> <tr> <td>3-1/2" or less</td> <td>60%</td> </tr> <tr> <td>3-9/16" to 5-1/2"</td> <td>75%</td> </tr> <tr> <td>5-9/16" to 7-1/2"</td> <td>85%</td> </tr> </table>	Hanger Width	% of table load:	3-1/2" or less	60%	3-9/16" to 5-1/2"	75%	5-9/16" to 7-1/2"	85%	100% of table load per side	100% of table load
Hanger Width	% of table load:														
3-1/2" or less	60%														
3-9/16" to 5-1/2"	75%														
5-9/16" to 7-1/2"	85%														
Ordering	Add <i>SK</i> , angle required, right (<i>R</i>) or left (<i>L</i>), and square cut (<i>SQ</i>) or bevel cut (<i>BI</i>) to product number. Ex. SW212_SK45R_SQ	Add <i>SL</i> , slope required, and up (<i>U</i>) or down (<i>D</i>), to product number. Ex. SW212_SL30D	See Sloped Seat and Skewed. Ex. SW212_SK45R_SQ_SL30D	Add <i>SF</i> , angle required, and right (<i>R</i>) or left (<i>L</i>), to product number. Ex. SW212_SF30L	Add <i>OS</i> , and right (<i>R</i>) or left (<i>L</i>), to product number. Ex. SW212_OLS	Add <i>SA</i> , and saddle width required to product number. Ex. SW212_SA=5-1/2"	Add <i>DA</i> , angle required to product number. Ex. SW212_DA30								

- 1) Skewed hangers with skews greater than 15° may have all joist nailing on outside flange.
- 2) Sloped or sloped / skewed hangers with slopes greater than 15° may have additional joist nails.
- 3) For skewed hangers, the required cut type (square or bevel) of joist member may vary based on skew angle and width of hanger. Some square cut hangers will require custom pricing due to welded back plate.
- 4) Sloped top flanges with greater than 15° may have additional header nails.

Top Mount Hanger Charts

Hangers

Beam/ Joist Size	MiTek USP Stock No.	Ref. No.	Steel Gauge	Dimensions (in)					Fastener Schedule ⁴					DF/SP Allowable Loads (Lbs.) ³				Corrosion Finish	Code Ref.
				W	H	D	L	TF	Header		Joist			Floor	Roof	Uplift ^{1,2}			
									Qty	Type	Qty	Type							
				Top	Face	Type	Qty	Type	100%	115%	125%	160%							
2 x 4	HDO24	HU24TF	12	1-9/16	3-7/16	2-1/4	--	2-1/2	4	2	16d	2	10d x 1-1/2	2405	2440	2460	330		
2 x 6	HL26	JB26	18	1-9/16	5-3/8	1-1/2	--	1-5/16	2	4	16d	2	prongs	1255	1255	1255	--		
	KLB26	LB26	14	1-9/16	5-3/8	1-1/2	--	1-3/8	2	4	16d	2	10d x 1-1/2	1670	1705	1725	390		
	SW26	--	12	1-9/16	5-3/8	2-1/2	6-1/2	2-1/2	2	--	10d	2	10d x 1-1/2	2315	2315	2315	135		
	HDO26	HU26TF	12	1-9/16	5-3/8	2-1/4	--	2-1/2	4	6	16d	4	10d x 1-1/2	2705	2770	2815	825		
2 x 8	HL28	JB28	18	1-9/16	7-5/16	1-3/4	--	1-5/16	2	4	16d	2	prongs	1490	1490	1490	--		
	KLB28	LB28	14	1-9/16	7-1/4	1-3/4	--	1-3/8	2	4	16d	2	10d x 1-1/2	1905	1935	1960	390		
	SW28	--	12	1-9/16	7-1/8	2-1/2	6-1/2	2-1/2	2	--	10d	2	10d x 1-1/2	2315	2315	2315	135		
	HDO28	HU28TF	12	1-9/16	7-1/8	2-1/4	--	2-1/2	4	6	16d	4	10d x 1-1/2	2705	2770	2815	825		
2 x 10	HL210	JB210A	18	1-9/16	9-5/16	2	--	1-5/16	2	4	16d	2	prongs	1490	1490	1490	--		
	KLB210	LB210A	14	1-9/16	9-1/4	2	--	1-3/8	2	4	16d	2	10d x 1-1/2	2140	2170	2195	390		
	SW210	--	12	1-9/16	9-1/8	2-1/2	6-1/2	2-1/2	2	--	10d	2	10d x 1-1/2	2315	2315	2315	135		
	HDO210	HU210TF	12	1-9/16	9-1/8	2-1/4	--	2-1/2	4	8	16d	4	10d x 1-1/2	2705	2770	2815	825		
2 x 12	HL212	JB212A	18	1-9/16	11-1/4	2-5/16	--	1-5/16	2	4	16d	2	prongs	1490	1490	1490	--		
	KLB212	LB212A	14	1-9/16	11-1/8	2	--	1-3/8	2	4	16d	2	10d x 1-1/2	2140	2170	2195	390		
	SW212	--	12	1-9/16	11-1/8	2-1/2	6-1/2	2-1/2	2	--	10d	2	10d x 1-1/2	2315	2315	2315	135		
	HDO212	HU212TF	12	1-9/16	11	2-1/4	--	2-1/2	4	10	16d	6	10d x 1-1/2	3005	3105	3165	1190		
2 x 14	HL214	JB214A	18	1-9/16	13-1/8	2	--	2-1/2	2	6	16d	2	10d x 1-1/2	1490	1490	1490	250		
	SW214	--	12	1-9/16	13-1/8	2-1/2	6-1/2	2-1/2	2	--	10d	2	10d x 1-1/2	2315	2315	2315	135		
	HDO214	HU214TF	12	1-9/16	13	2-1/4	--	2-1/2	4	12	16d	6	10d x 1-1/2	3005	3105	3140	1190		
2 x 16	SW216	--	12	1-9/16	15-1/8	2-1/2	6-1/2	2-1/2	2	--	10d	2	10d x 1-1/2	2315	2315	2315	135		
	HDO216	HU216TF, LB216	12	1-9/16	15	2-1/4	--	2-1/2	4	14	16d	8	10d x 1-1/2	3300	3435	3520	1700		
3 x 4	HDO34	HU34TF	12	2-9/16	3-7/16	2-1/2	--	2-1/2	4	4	16d	2	10d x 1-1/2	2965	2965	2965	330		
3 x 6	SW36	--	12	2-9/16	5-3/8	2-1/2	6-1/2	2-1/2	2	--	10d	2	10d x 1-1/2	2520	2520	2520	135		
	HDO36	HU36TF	12	2-9/16	5-3/8	2-1/2	--	2-1/2	4	6	16d	4	10d x 1-1/2	4125	4320	4450	825		
3 x 8	SW38	--	12	2-9/16	7-1/8	2-1/2	6-1/2	2-1/2	2	--	10d	2	10d x 1-1/2	2520	2520	2520	135		
	HDO38	HU38TF	12	2-9/16	7-1/8	2-1/2	--	2-1/2	4	8	16d	4	10d x 1-1/2	4465	4570	4575	825		
3 x 10	SW310	--	12	2-9/16	9-1/8	2-1/2	6-1/2	2-1/2	2	--	10d	2	10d x 1-1/2	2520	2520	2520	135		
	HDO310	HU310TF	12	2-9/16	9-1/8	2-1/2	--	2-1/2	4	10	16d	6	10d x 1-1/2	4575	4575	4575	1065		
3 x 12	SWH312	--	7/12	2-9/16	11-1/8	2-1/2	7	2-1/2	2	--	16d	2	10d x 1-1/2	3305	3305	3305	135		
	HDO312	HU312TF	12	2-9/16	11	2-1/2	--	2-1/2	4	12	16d	6	10d x 1-1/2	4800	4900	4965	1115		
3 x 14	SWH314	--	7/12	2-9/16	13-1/8	2-1/2	7	2-1/2	2	--	16d	2	10d x 1-1/2	3305	3305	3305	135		
	HDO314	HU314TF	12	2-9/16	13	2-1/2	--	2-1/2	4	14	16d	8	10d x 1-1/2	5100	5230	5315	1115		
3 x 16	SWH316	--	7/12	2-9/16	15-1/8	2-1/2	7	2-1/2	2	--	16d	2	10d x 1-1/2	3305	3305	3305	135		
	HDO316	HU316TF	12	2-9/16	15	2-1/2	--	2-1/2	4	16	16d	8	10d x 1-1/2	5100	5230	5315	1700		
(2) 2 x 4	HDO24-2	HU24-2TF	12	3-1/8	3-7/16	2-1/4	--	2-1/2	4	4	16d	2	10d	2965	2965	2965	400		
(2) 2 x 6	SWH26-2	WP26-2	7/12	3-1/8	5-3/8	2-1/2	7	2-1/2	2	--	16d	2	10d	3305	3305	3305	135		
	HDO26-2	HU26-2TF, HUS26-2TF	12	3-1/8	5-3/8	2-1/4	--	2-1/2	4	6	16d	4	10d	4125	4320	4450	825		
(2) 2 x 8	SWH28-2	WP28-2	7/12	3-1/8	7-1/8	2-1/2	7	2-1/2	2	--	16d	2	10d	3305	3305	3305	135		
	HDO28-2	HU28-2TF, HUS28-2TF	12	3-1/8	7-1/8	2-1/4	--	2-1/2	4	8	16d	4	10d	4465	4575	4575	825		

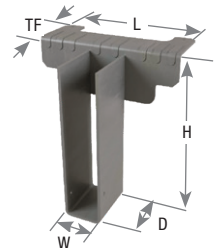
IBC,
FL,
LA

Hangers

Copyright © 2020 MiTek Industries, Inc. All Rights Reserved

- 1) Uplift Loads have been increased 60% for wind or seismic loads; no further increase shall be permitted.
- 2) HL products do not provide uplift resistance, except for the HL214.
- 3) Refer to the respective Nailer Options chart on page 168 for hangers installed on wood nailers.
- 4) **NAILS:** 10d x 1-1/2 nails are 0.148" dia. x 1-1/2" long, 10d nails are 0.148" dia. x 3" long, 16d nails are 0.162" dia. x 3-1/2" long. New products or updated product information are designated in **blue font**.

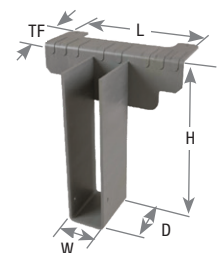
Corrosion Finish ■ Stainless Steel ■ Gold Coat ■ HDG ■ Triple Zinc



Continued on next page

Beam/ Joist Size	MiTek USP Stock No.	Ref. No.	Steel Gauge	Dimensions (in)					Fastener Schedule ⁴					DF/SP Allowable Loads (Lbs.) ^{2,3}				Code Ref.	
				W	H	D	L	TF	Header		Joist			Floor		Roof			Uplift ¹
									Qty	Face	Type	Qty	Type	100%	115%	125%	160%		
(2) 2 x 10	SWH210-2	WP210-2	7/12	3-1/8	9-1/8	2-1/2	7	2-1/2	2	--	16d	2	10d	3305	3305	3305	135	IBC, FL, LA	
	HDO210-2	HU210-2TF, HUS210-2TF	12	3-1/8	9-1/8	2-1/2	--	2-1/2	4	10	16d	6	10d	4575	4575	4575	1275		
	HDO210-2IF	HUC210-2TF, HUSC210-2TF	12	3-1/8	9-1/8	2-1/2	--	2-1/2	4	10	16d	6	10d	4575	4575	4575	1275		
(2) 2 x 12	SWH212-2	WP212-2	7/12	3-1/8	11-1/8	2-1/2	7	2-1/2	2	--	16d	2	10d	3305	3305	3305	135		
	HDO212-2	HU212-2TF, HUS212-2TF	12	3-1/8	11	2-1/2	--	2-1/2	4	12	16d	6	10d	5155	5465	5675	1275		
(2) 2 x 14	SWH214-2	WP214-2	7/12	3-1/8	13-1/8	2-1/2	7	2-1/2	2	--	16d	2	10d	3305	3305	3305	135		
	HDO214-2	HU214-2TF, HUS214-2TF	12	3-1/8	13	2-1/2	--	2-1/2	4	14	16d	8	10d	5500	5845	6080	1510		
(2) 2 x 16	SWH216-2	WP216-2	7/12	3-1/8	15-1/8	2-1/2	7	2-1/2	2	--	16d	2	10d	3305	3305	3305	135		
	HDO216-2	HU216-2TF	12	3-1/8	15	2-1/2	--	2-1/2	4	16	16d	8	10d	5845	6010	6100	1700		
4 x 4	HDO44	HU44TF	12	3-9/16	3-7/16	2-1/4	--	2-1/2	4	4	16d	2	10d	2965	2965	2965	400		
4 x 6	SW46	WP46	12	3-9/16	5-3/8	2-1/2	6-1/2	2-1/2	2	--	10d	2	10d	2520	2520	2520	135		
	HDO46	HU46TF	12	3-9/16	5-3/8	2-1/4	--	2-1/2	4	6	16d	4	10d	4125	4320	4450	825		
	KHW46	--	3/10	3-9/16	5-3/8	2-1/2	10	2-1/2	4	--	NA20D	2	10d	5535	5535	5535	135		
4 x 8	SW48	WP48	12	3-9/16	7-1/8	2-1/2	6-1/2	2-1/2	2	--	10d	2	10d	2520	2520	2520	135		
	HDO48	BA48, HU48TF	12	3-9/16	7-1/8	2-1/4	--	2-1/2	4	8	16d	4	10d	4465	4575	4575	825		
	KHW48	--	3/10	3-9/16	7-1/8	2-1/2	10	2-1/2	4	--	NA20D	2	10d	5535	5535	5535	135		
4 x 10	SW410	--	12	3-9/16	9-1/8	2-1/2	6-1/2	2-1/2	2	--	10d	2	10d	2520	2520	2520	135		
	HDO410	BA410, HU410TF	12	3-9/16	9-1/8	2-1/4	--	2-1/2	4	10	16d	6	10d	4785	4785	4785	1275		
	SWH410	WP410	7/12	3-9/16	9-1/8	2-1/2	7	2-1/2	2	--	16d	2	10d	3305	3305	3305	135		
	KHW410	--	3/10	3-9/16	9-1/8	2-1/2	10	2-1/2	4	--	NA20D	2	10d	5535	5535	5535	135		
4 x 12	KB412	--	12	3-9/16	11-1/8	2-3/8	--	2-1/2	4	2	NA20D	2	NA20D	4075	4155	4185	580		
	HDO412	HU412TF	12	3-9/16	11	2-1/4	--	2-1/2	4	12	16d	6	10d	5155	5465	5675	1275		
	SWH412	WP412	7/12	3-9/16	11-1/8	2-1/2	7	2-1/2	2	--	16d	2	10d	3305	3305	3305	135		
	KHW412	--	3/10	3-9/16	11-1/8	2-1/2	10	2-1/2	4	--	NA20D	2	10d	5535	5535	5535	135		
4 x 14	HDO414	HU414TF	12	3-9/16	13	2-1/2	--	2-1/2	4	14	16d	8	10d	5500	5845	6080	1510		
	SWH414	WP414	7/12	3-9/16	13-1/8	2-1/2	7	2-1/2	2	--	16d	2	10d	3305	3305	3305	135		
	KHW414	--	3/10	3-9/16	13-1/8	2-1/2	10	2-1/2	4	--	NA20D	2	10d	5535	5535	5535	135		
4 x 16	HDO416	HU416TF	12	3-9/16	15	2-1/2	--	2-1/2	4	16	16d	8	10d	5845	6230	6460	1700		
	SWH416	WP416	7/12	3-9/16	15-1/8	2-1/2	7	2-1/2	2	--	16d	2	10d	3305	3305	3305	135		
	KHW416	--	3/10	3-9/16	15-1/8	2-1/2	10	2-1/2	4	--	NA20D	2	10d	5535	5535	5535	135		

- 1) Uplift Loads have been increased 60% for wind or seismic loads; no further increase shall be permitted.
 - 2) KHW Glulam load values are based on 560 psi perpendicular to grain loading.
 - 3) Refer to the respective Nailer Options chart on page 168 for hangers installed on wood nailers.
 - 4) **NAILS:** 10d nails are 0.148" dia. x 3" long, 16d nails are 0.162" dia. x 3-1/2" long, NA20D nails are 0.192" dia. x 2-1/2" long and are included with KB and KHW hangers.
- New products or updated product information are designated in **blue font**.



Continued on next page

Top Mount Hanger Charts

Beam/ Joist Size	MiTek USP Stock No.	Ref. No.	Steel Gauge	Dimensions (in)					Fastener Schedule ⁵					DF/SP Allowable Loads (Lbs.) ^{2,3}				Code Ref.
				W	H	D	L	TF	Header		Joist			Floor 100%	Roof		Uplift ¹ 160%	
									Qty	Type	Qty	Type	115%		125%			
																Top		
(3) 2 x 10	HD0210-3	HU210-3TF	12	4-11/16	9-1/8	2-1/2	--	2-1/2	4	10	16d	6	16d	4575	4575	4575	1450	IBC, FL, LA
(3) 2 x 12	HD0212-3	HU212-3TF	12	4-11/16	11	2-1/2	--	2-1/2	4	12	16d	6	16d	5155	5465	5675	1490	
(3) 2 x 14	HD0214-3	HU214-3TF	12	4-11/16	13	2-1/2	--	2-1/2	4	14	16d	8	16d	5500	5845	6080	1985	
(3) 2 x 16	HD0216-3	HU216-3TF	12	4-11/16	15	2-1/2	--	2-1/2	4	16	16d	8	16d	5845	6230	6460	1985	
6 x 6	HDO66	HU66TF	12	5-1/2	5-3/8	2-1/2	--	2-1/2	4	6	16d	4	16d	4125	4320	4450	990	
	SWH66	WP66	7/12	5-1/2	5-3/8	2-1/2	7	2-1/2	2	--	16d	2	10d	3305	3305	3305	135	
	KHW66	--	3/10	5-1/2	5-3/8	2-1/2	10	2-1/2	4	--	NA20D	2	10d	5535	5535	5535	135	
6 x 8	HDO68	HU68TF	12	5-1/2	7-1/8	2-1/2	--	2-1/2	4	8	16d	4	16d	4465	4575	4575	990	
	SWH68	WP68	7/12	5-1/2	7-1/8	2-1/2	7	2-1/2	2	--	16d	2	10d	3305	3305	3305	135	
	KHW68	--	3/10	5-1/2	7-1/8	2-1/2	10	2-1/2	4	--	NA20D	2	10d	5535	5535	5535	135	
6 x 10	KB610	--	12	5-1/2	9-1/4	2-3/8	--	2-1/2	4	6	NA20D	2	NA20D	4795	4920	4920	580	
	HDO610	HU610TF	12	5-1/2	9-1/8	2-1/2	--	2-1/2	4	10	16d	6	16d	4575	4575	4575	1450	
	SWH610	WP610	7/12	5-1/2	9-1/8	2-1/2	7	2-1/2	2	--	16d	2	10d	3305	3305	3305	135	
	KHW610	--	3/10	5-1/2	9-1/8	2-1/2	10	2-1/2	4	--	NA20D	2	10d	5535	5535	5535	135	
6 x 12	KB612	--	12	5-1/2	11-1/8	2-3/8	--	2-1/2	4	6	NA20D	2	NA20D	4795	4920	4920	580	
	HDO612	HU612TF	12	5-1/2	11	2-1/2	--	2-1/2	4	12	16d	6	16d	5155	5465	5675	1365	
	KHW612	--	3/10	5-1/2	11-1/8	2-1/2	10	2-1/2	4	--	NA20D	2	10d	5535	5535	5535	135	
6 x 14	HDO614	HU614TF	12	5-1/2	13	2-1/2	--	2-1/2	4	14	16d	8	16d	5500	5845	6080	1510	
	KHW614	--	3/10	5-1/2	13-1/8	2-1/2	10	2-1/2	4	--	NA20D	2	10d	5535	5535	5535	135	
6 x 16	HDO616	HU616TF	12	5-1/2	15	2-1/2	--	2-1/2	4	16	16d	8	16d	5845	6230	6460	1830	
	KHW616	--	3/10	5-1/2	15-1/8	2-1/2	10	2-1/2	4	--	NA20D	2	10d	5535	5535	5535	135	
8 x 6	KHW86	--	3/10	7-1/2	5-3/8	2-1/2	10	2-1/2	4	--	NA20D	2	10d	5535	5535	5535	135	
8 x 8	KHW88	--	3/10	7-1/2	7-1/8	2-1/2	10	2-1/2	4	--	NA20D	2	10d	5535	5535	5535	135	
8 x 10	KHW810	--	3/10	7-1/2	9-1/8	2-1/2	10	2-1/2	4	--	NA20D	2	10d	5535	5535	5535	135	
8 x 12	KHW812	--	3/10	7-1/2	11-1/8	2-1/2	10	2-1/2	4	--	NA20D	2	10d	5535	5535	5535	135	
8 x 14	KHW814	--	3/10	7-1/2	13-1/8	2-1/2	10	2-1/2	4	--	NA20D	2	10d	5535	5535	5535	135	
8 x 16	KHW816	--	3/10	7-1/2	15-1/8	2-1/2	10	2-1/2	4	--	NA20D	2	10d	5535	5535	5535	135	
GLULAM SIZES⁴																		
2-1/2 glulam	KHW26	--	3/10	2-11/16	specify	4	10	2-1/2	4	--	NA20D	2	10d x 1-1/2	5295	5295	5295	135	IBC, FL, LA
3-1/8 glulam	KHW3	--	3/10	3-1/4	specify	3	10	2-1/2	4	--	NA20D	2	10d	5535	5535	5535	135	
5-1/8 glulam	KHW5	--	3/10	5-1/4	specify	2-1/2	10	2-1/2	4	--	NA20D	2	10d	5535	5535	5535	135	

- Uplift Loads have been increased 60% for wind or seismic loads; no further increase shall be permitted.
 - KHW Glulam load values are based on 560 psi perpendicular to grain loading.
 - Refer to the respective Nailor Options chart on page 168 for hangers installed on wood nailers.
 - Consult MiTek for additional Glulam sizes.
 - NAILS:** 10d x 1-1/2 nails are 0.148" dia. x 1-1/2" long, 16d nails are 0.162" dia. x 3-1/2" long, NA20D nails are 0.192" dia. x 2-1/2" long and are included with KHW hangers.
- New products or updated product information are designated in **blue font**.

